

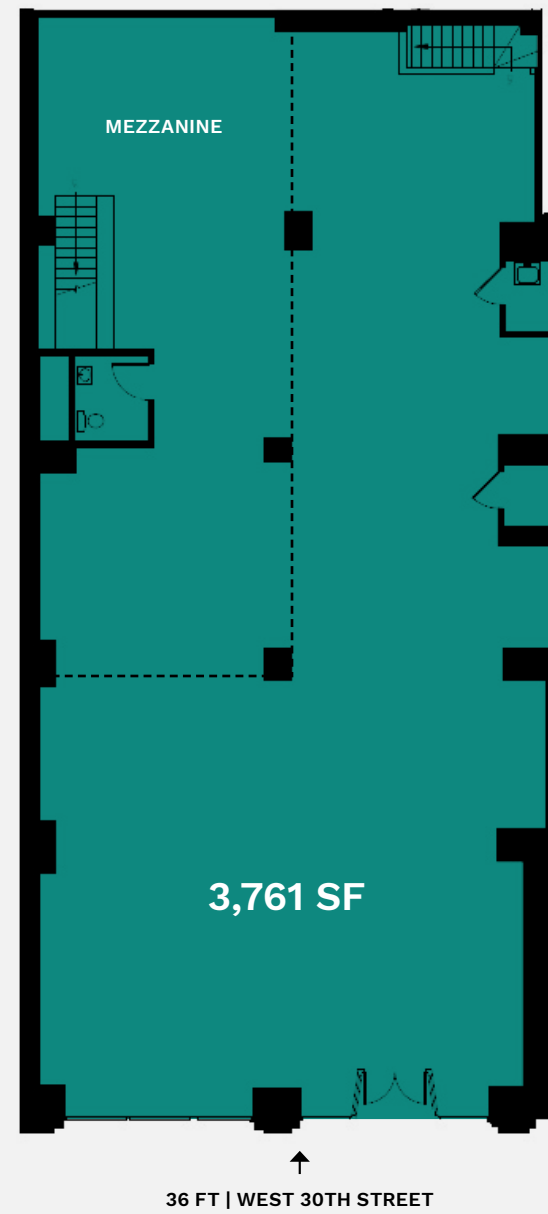
133 West 30th Street aka 31 Penn Plaza

PENN PLAZA
NEW YORK, NY



Space Details

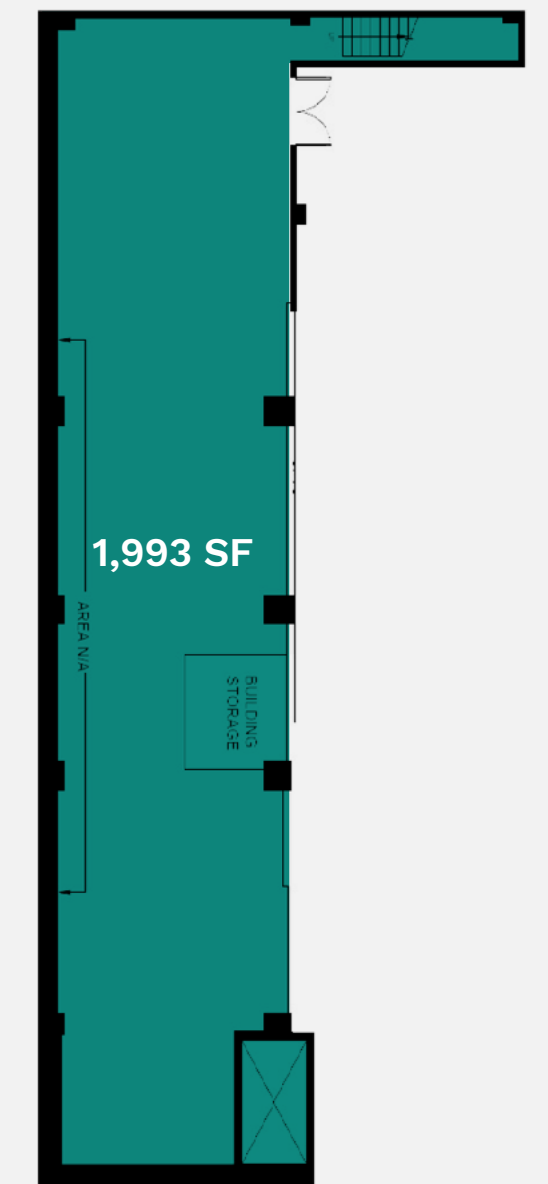
GROUND FLOOR



MEZZANINE



LOWER LEVEL



Location

North block between Sixth and Seventh Avenues

Approximate Size

Ground Floor: 3,761 SF*

Mezzanine: 967 SF

Lower Level: 1,993 SF

Total: 6,721 SF

*Divisible

Ceiling Height

Ground Floor: 19 FT 8 IN

Mezzanine: 8 FT 4 IN

Lower Level: 13 FT 4 IN

Frontage

35 FT on West 30th Street

Site Status

Formerly Fashion Express US

Term

Long term

Possession

Immediate

Neighbors

Blink Fitness, Browns Bagels, Fresh & Co., Friedman's, Ichiran, L'Amico, Nike, Nordstrom Rack and Pennsylvania 6

Comments

All uses accepted; space can be vented

Located at the base of 31 Penn Plaza, a Class A office building which recently completed a \$25 million capital improvement program

31 Penn Plaza is home to architecture firms, media agencies and other great office tenants, including Spaces Co-working which will occupy 84,000 SF and have a dedicated lobby entrance on West 30th Street adjacent to the space

Steps from Madison Square Garden, Penn Station and Herald Square, with easy access to



Area Neighbors



Contact Exclusive Agents

masonre

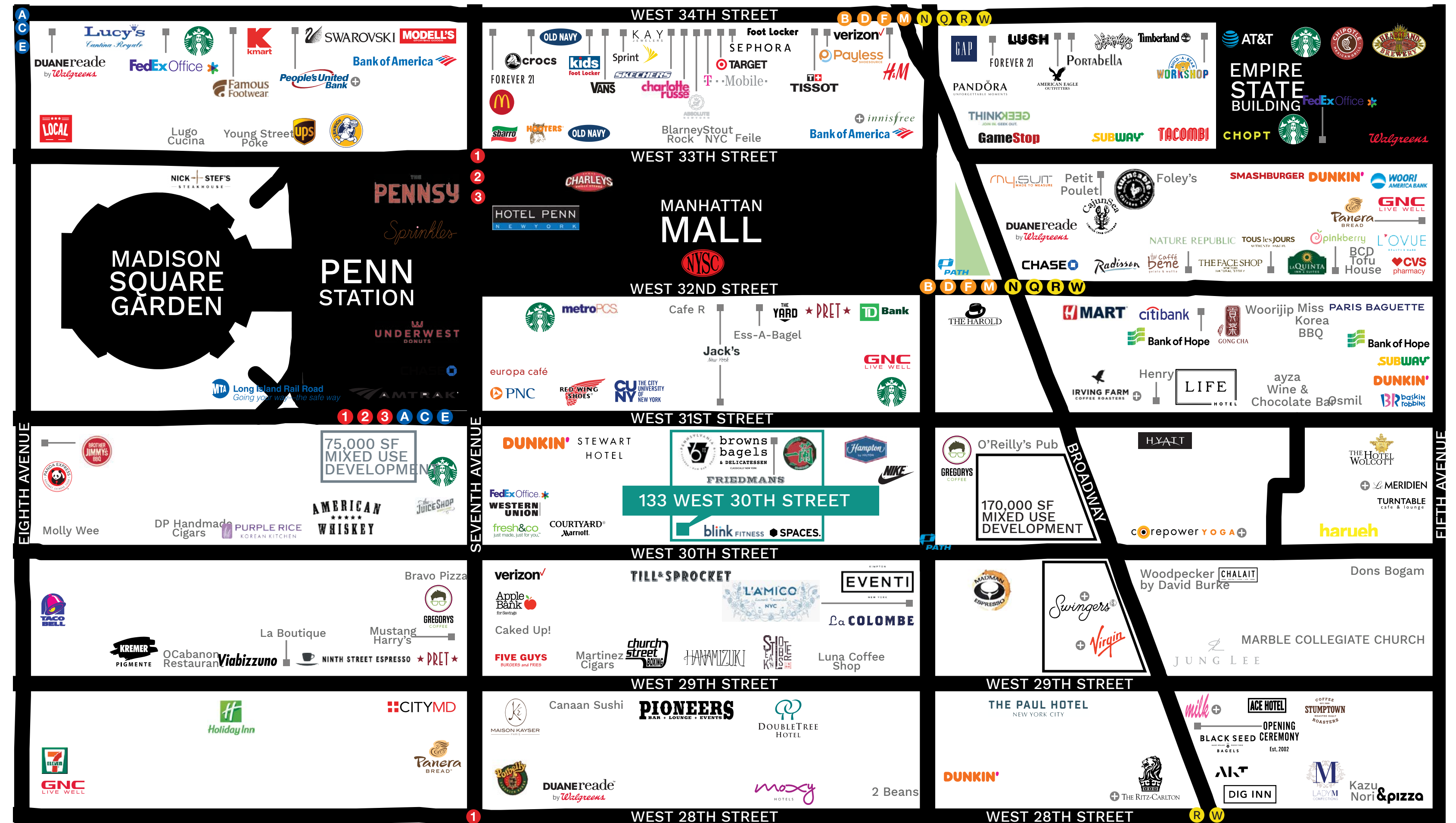
masonre is a real estate brokerage and advisory firm with a strong history of leading the growth of trophy retail assets and brands in New York City, Miami, and Los Angeles.

masonre.com

David Abrams
david@masonre.com
212.222.1496

Eliot Goldschmidt
eliot@masonre.com
917.902.8039

Brandon Miller
brandonalden.miller@ngkf.com
917.513.7933



31 Penn Plaza Tenants

browns bagels & DELICATESSEN FRIEDMANS

blink FITNESS

SPACES.

© 2021 MASONRE All information supplied is from sources deemed reliable and is furnished subject to errors, omissions, modifications, removal of the listing for sale or lease, and to any listing conditions, including the rates and manner of payment of commissions for particular offerings imposed by principals or agreed by masonre, the terms of which are available to principals or duly licensed brokers. Any square footage dimensions set forth are approximate.